

HYDRATING PRO-INFUSION *dry skin*

LUMIXYL PRO-INFUSION *hyperpigmentation*



GIVEN IN TO  
DARK SPOTS  
& UNEVEN  
TONE?

**BRIGHTEN AND BLEND WITH LUMIXYL™**

The SilkPeel® Dermalinfusion™ Lumixyl Pro-Infusion employs cutting-edge peptide technology to improve the appearance of discoloration and achieve a more even tone overall. Formulated specifically for delivery with the SilkPeel Dermalinfusion System, treatment with the Lumixyl Pro-Infusion offers an accelerated approach to brightening that is effective and without the risks or irritation of other brightening agents.

**RESULTS WITHOUT RISK**

As a stand-alone treatment or in combination with laser or other light procedures for pigmentation, Lumixyl with SilkPeel Dermalinfusion will not elicit irritation or allergic reaction.

**THE TREATMENT IS:**

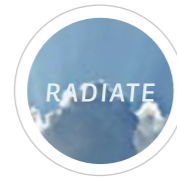
- COMPLETELY NON-TOXIC
- WILL NOT CAUSE ANY SENSITIVITY TO SUNLIGHT
- A SAFE TREATMENT FOR ALL SKIN TYPES



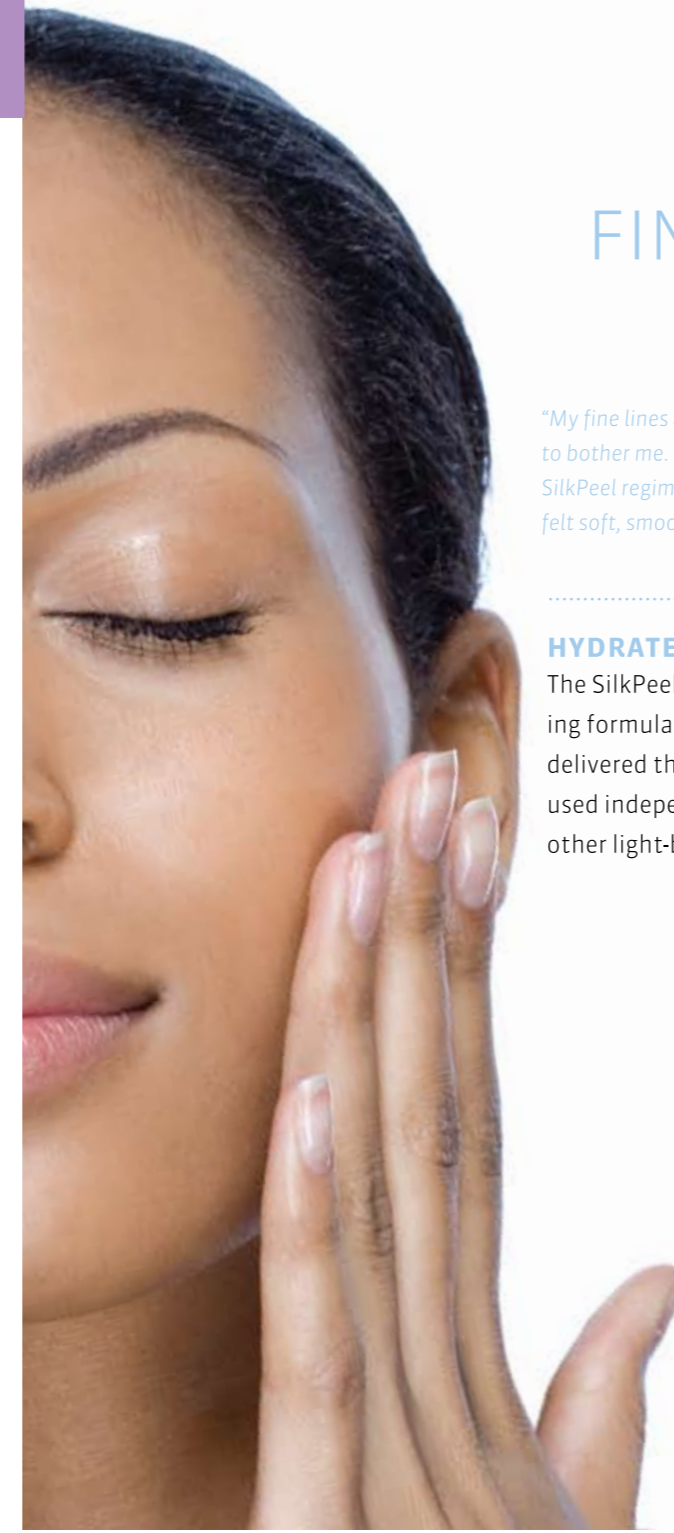
**CLARIFY – LUMIXYL:** Naturally occurring amino acids help to diminish dark spots caused by age and photodamage without the use of abrasive chemicals.



**BRIGHTEN – LUMIXYL:** With no risk of irritation, the powerful peptide can be used continuously to achieve a brighter complexion and even tone.



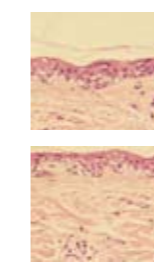
**RADIATE – LUMIXYL:** The combination treatment leaves your skin feeling fresh, healthy and luminous.



TIRED OF  
FINE LINES &  
DRYNESS?

*"My fine lines and wrinkles were really starting to bother me. My doctor recommended a SilkPeel regimen and when I was done, my skin felt soft, smooth and was visibly brighter."*  
—Janet C

**STUDIES SHOW AN EVEN ABRASION OF THE SKIN'S SURFACE AND THE RAPID HYDRATION OF SKIN CELLS.\***



Depicts an even penetration of the stratum corneum  
Dermal edema suggests the hydration of the dermis

\* Moy LS, Maley C. "Skin management: A Practical Approach," Plastic Surgery Products, January 2007, Pages 24-28.

**HYDRATE YOUR SKIN WITH HYALURONIC ACID**

The SilkPeel® Dermalinfusion™ Skin Hydrating Pro-Infusion is a nutrient-rich moisturizing formula developed to quench the thirstiest skin. Specifically designed to be delivered through the SilkPeel Dermalinfusion System, the hydrating procedure can be used independently or to increase patient satisfaction when combined with lasers and other light-based treatments.



**SMOOTH – HYALURONIC ACID:** Reduces the appearance of fine lines and wrinkles while improving overall texture.



**HYDRATE – ALOE:** Calms inflammation and irritation, leaving skin soft, supple and moisturized.



**CALM – CHAMOMILE:** Protects from harmful free-radicals while calming dry, irritated skin.

DOES YOUR  
BODY NEED  
A FACIAL?

In addition to SilkPeel® Dermalinfusion™'s suite of high-performing topical solutions, a selection of treatment heads enable the operator to more precisely target problem areas.



**FIRM, CLEAR AND TIGHTEN - PAINLESSLY**

The SilkPeel BODY System offers multiple modalities for improving skin imperfections and tone all over the body. Be it acne, stretch marks, chronic dryness, sagging skin or cellulite - the SilkPeel BODY System's adjustable settings enable the delivery of targeted solutions at the appropriate depth for a range of skin types and conditions. The SilkPeel Body Dermalinfusion procedure is effective as a standalone treatment or as a complement to a variety of other body procedures.



**SHAPE – CELLULITE:** Deep lymphatic massage improves the appearance of cellulite and the structure of the body's skin – painlessly.



**CLARIFY – ACNE, SUN SPOTS, STRETCH MARKS:** Targeted topicals are infused deep into the skin, helping to improve some of the most frustrating skin imperfections affecting the body.



**EXFOLIATE – ROUGHNESS, DRYNESS, DULLNESS:** Diamond-plated treatment heads exfoliate dead skin cells, revealing softer, healthier, more radiant skin immediately.



**TIGHTEN – ELASTICITY** Combination therapy helps to restore elasticity to limp and sagging skin.